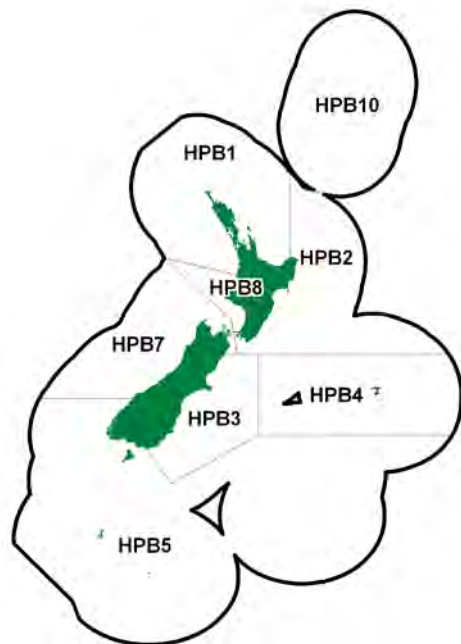


**GROPER (HPB)**

(*Polyprion oxygeneios*, *Polyprion americanus*)  
Hāpuku, Moeone

**1. FISHERY SUMMARY****1.1 Commercial fisheries**

Both groper species, *Polyprion oxygeneios* (hāpuku) and *P. americanus* (bass), occur in shelf and slope waters of the New Zealand mainland and offshore islands, from the Kermadecs to the Auckland Islands. The groper fishery takes both species, but in different proportions by region, depth, fishing method and season, and these have changed over time. Reported landings generally do not distinguish between species, and published data combine them. In earlier years, bluenose (*Hyperoglyphe antarctica*) landings were sometimes also combined with groper. In this document, groper is used as collective term for hāpuku and bass. Historical estimated and recent reported groper landings and TACCs are shown in Tables 1, 2 and 3, while Figure 1 shows the historical and recent landings and TACC values for the main groper stocks.

**Table 1: Reported total New Zealand landings (t) of groper from 1948 to 1983.**

Year	Landings	Year	Landings	Year	Landings	Year	Landings
1948	1 665	1957	1 368	1966	1 222	1975	1 422
1949	1 969	1958	1 532	1967	1 314	1976	1 512
1950	1 709	1959	1 310	1968	1 073	1977	1 942
1951	1 396	1960	1 223	1969	1 122	1978	1 488
1952	1 430	1961	1 203	1970	1 499	1979	2 078
1953	1 403	1962	1 173	1971	1 346	1980	2 435
1954	1 364	1963	1 194	1972	1 120	1981	2 379
1955	1 305	1964	1 370	1973	1 312	1982	2 218
1956	1 399	1965	1 249	1974	1 393	1983	2 511

Reported foreign catches are included from 1974.

Source: Fisheries data.

The main fishery comprises a number of domestic fishers working small to medium sized vessels - longliners, setnetters and trawlers, at a variety of depths (according to method) out to 500 m (Paul 2002a). Over 90% of early (to 1950) total groper catches were taken by longline. Trawl catches rose from 5–10% during this period to 20–30% by the late 1970s. A setnet fishery developed in the late 1970s and early 1980s, mainly at Kaikoura, taking 14% in 1983 and then subsequently declining. From 1950 to the mid-1980s, line-fishing took 70–80% of the catch. After the introduction of the QMS in 1986, the proportion of the catch taken by lines appeared to drop.

## GROPER (HPB)

The Cook Strait region has always supported the main groper fishery, followed by the Canterbury Bight; both show the same slow decline from 1949 to 1986 (equivalent regional data from subsequent years are not available). Northland, Bay of Plenty and Hawke Bay fisheries developed at different rates during the 1960s and 1970s. In most other areas, the groper fishery has been small and/or variable.

The first recorded landings of about 1 500 t in 1936 were typical of the range of catches (1 000–2 000 t) from then until 1978. After a decrease during the war when effort was restricted, landings in the total fishery slowly declined from almost 2 000 t in 1949 to about 1 300 t in the mid-1970s. They then increased sharply to 2 700 t in 1983–84 (Tables 1 and 2). Figure 1 shows the historical landings and TACC values for the main HPB stocks.

Landings and TACCs for all Fishstocks are given in Table 3. Total landings of groper were relatively stable throughout the mid-1990s, remaining below 1 500 t until 1998–99. From 1999–2000 onwards, landings have generally ranged between 1 200 t and 1 700 t. Although the TACC in HPB 3 has been exceeded in some years, landings have generally remained within the quotas for individual Fishstocks and have never exceeded the total TACC.

For the 1991–92 fishing year the conversion factor for headed and gutted groper was increased from 1.40 to 1.45, for fish landed in this state (about 75% of the total), which resulted in a reduction in removals from the stock of 3.5% for the same nominal quota.

**Table 2: Reported landings (t) for the main QMAs from 1931 to 1982.**

Year	HPB 1	HPB 2	HPB 3	HPB 4	Year	HPB 1	HPB 2	HPB 3	HPB 4
1931–32	231	0	207	2	1957	133	380	419	23
1932–33	201	276	242	0	1958	115	473	458	30
1933–34	198	330	173	25	1959	147	406	350	54
1934–35	204	304	212	57	1960	122	394	331	48
1935–36	179	201	146	70	1961	135	369	348	50
1936–37	129	445	115	12	1962	163	355	298	40
1937–38	119	523	315	15	1963	197	315	321	56
1938–39	90	621	479	8	1964	224	397	365	41
1939–40	118	502	409	12	1965	212	368	325	68
1940–41	120	444	286	9	1966	213	415	315	4
1941–42	80	450	302	10	1967	229	448	275	0
1942–43	69	287	315	9	1968	139	357	264	0
1943–44	59	316	271	8	1969	197	454	220	0
1944	55	332	286	9	1970	259	670	239	2
1945	106	311	271	3	1971	191	562	289	4
1946	154	326	409	7	1972	401	370	188	0
1947	98	401	563	5	1973	419	481	215	0
1948	111	450	526	11	1974	356	457	208	2
1949	174	498	547	7	1975	227	315	213	18
1950	141	423	555	9	1976	183	220	350	107
1951	104	353	381	19	1977	277	301	265	87
1952	112	368	373	35	1978	348	470	194	10
1953	105	349	431	33	1979	620	487	355	147
1954	156	355	397	32	1980	956	376	414	40
1955	142	351	419	26	1981	693	373	457	59
1956	106	404	439	32	1982	957	336	402	26

Year	HPB 5	HPB 7	HPB 8	Year	HPB 5	HPB 7	HPB 8
1931–32	130	13	13	1957	92	246	76
1932–33	91	98	53	1958	96	250	109
1933–34	99	127	53	1959	68	198	87
1934–35	115	106	56	1960	100	150	77
1935–36	33	109	33	1961	82	139	80
1936–37	29	156	50	1962	101	142	75
1937–38	29	148	52	1963	75	159	71
1938–39	75	156	50	1964	76	193	74
1939–40	59	155	43	1965	48	176	52
1940–41	54	142	41	1966	49	163	62
1941–42	46	150	44	1967	49	228	85

Table 2 [Continued]

Year	HPB 5	HPB 7	HPB 8	Year	HPB 5	HPB 7	HPB 8
1942-43	44	115	35	1968	67	176	70
1943-44	42	112	42	1969	30	138	84
1944	60	188	117	1970	54	175	97
1945	65	173	128	1971	41	181	78
1946	83	229	190	1972	29	99	33
1947	142	250	175	1973	30	136	32
1948	140	275	151	1974	43	140	72
1949	142	364	236	1975	55	379	62
1950	116	281	184	1976	101	445	37
1951	102	267	171	1977	47	575	113
1952	100	281	162	1978	59	280	67
1953	96	252	137	1979	113	276	71
1954	77	235	112	1980	199	315	105
1955	82	197	88	1981	218	381	166
1956	114	227	77	1982	133	256	46

Notes:

1. The 1931-1943 years are April-March but from 1944 onwards are calendar years.
2. Data up to 1985 are from fishing returns: Data from 1986 to 1990 are from Quota Management Reports.
3. Data for the period 1931 to 1982 are based on reported landings by harbour and are likely to be underestimated as a result of under-reporting and discarding practices. Data includes both foreign and domestic landings.

Table 3: Reported landings (t) of groper by Fishstock from 1983-84 to present and actual TACCs (t) from 1986-87 to present. QMS data from 1986-present. [Continued on next page].

Fishstock FMA (s)	HPB 1 1 & 9		HPB 2 2		HPB 3 3		HPB 4 4		HPB 5 5 & 6	
	Landings	TACC	Landings	TACC	Landings	TACC	Landings	TACC	Landings	TACC
1983-84*	974	-	493	-	505	-	55	-	395	-
1984-85*	642	-	388	-	418	-	52	-	228	-
1985-86*	569	-	270	-	391	-	53	-	126	-
1986-87	238	360	179	210	260	270	42	300	131	410
1987-88	248	388	202	219	268	286	43	315	91	414
1988-89	231	405	187	248	259	294	49	315	70	425
1989-90	310	465	179	263	283	318	40	322	127	430
1990-91	350	480	225	263	311	326	77	323	120	436
1991-92	277	480	252	263	298	326	58	323	112	446
1992-93	375	480	273	264	299	327	68	323	128	446
1993-94	363	480	287	264	306	330	90	323	147	446
1994-95	334	481	259	264	274	335	149	323	161	451
1995-96	335	481	214	264	321	335	173	323	144	451
1996-97	331	481	234	264	301	335	131	323	149	451
1997-98	375	481	260	266	329	335	88	323	91	451
1998-99	433	481	256	266	348	335	121	323	97	451
1999-00	471	481	229	266	385	335	66	323	169	451
2000-01	450	481	220	266	381	335	45	323	188	451
2001-02	427	481	226	266	343	335	82	323	169	451
2002-03	442	481	273	266	350	335	79	323	212	451
2003-04	433	481	281	266	335	335	87	323	166	451
2004-05	433	481	263	266	371	335	147	323	208	451
2005-06	425	481	280	266	406	335	185	323	167	451
2006-07	483	481	245	266	394	335	222	323	157	451
2007-08	439	481	253	266	341	335	241	323	138	451
2008-09	415	481	253	266	391	335	138	323	153	451
2009-10	374	481	249	266	358	335	213	323	152	451
2010-11	371	481	222	266	322	335	231	323	128	451
2011-12	312	481	193	266	336	335	265	323	158	451
2012-13	314	481	206	266	337	335	156	323	140	451
2013-14	319	481	224	266	301	335	169	323	143	451
2014-15	314	481	180	266	280	335	156	323	126	451
2015-16	270	481	143	266	315	335	144	323	143	451
2016-17	287	481	162	266	342	335	152	323	156	451
2017-18	276	481	159	266	344	335	142	323	158	451
2018-19	283	481	173	266	347	335	137	323	168	451

	HPB 7 7		HPB 8 8		HPB 10 10		Total	
	Landings	TACC	Landings	TACC	Landings	TACC	Landings	TACC
1983-84*	174	-	46	-	0	-	2 698	-
1984-85*	207	-	33	-	0	-	2 039	-
1985-86*	199	-	25	-	0	-	1 697	-
1986-87	149	210	35	60	0	10	1 036	1 830
1987-88	158	215	66	76	0	10	1 076	1 923
1988-89	132	226	39	78	1	10	968	2 001
1989-90	119	229	43	80	0	10	1 098	2 117
1990-91	128	235	48	80	23#	10	1 282	2 153
1991-92	175	235	50	80	83#	10	1 319	2 163
1992-93	186	236	62	80	22#	10	1 405	2 165

GROPER (HPB)

Table 3 [Continued]

	HPB 7		HPB 8		HPB 10		Total	
	Landings	TACC	Landings	TACC	Landings	TACC	Landings	TACC
1993-94	193	236	69	80	0	10	1 455	2 167
1994-95	192	236	68	80	0	10	1 437	2 179
1995-96	214	236	78	80	0	10	1 479	2 179
1996-97	186	236	71	80	15	10	1 418	2 179
1997-98	147	236	60	80	33#	10	1 406	2 181
1998-99	218	236	78	80	3#	10	1 562	2 181
1999-00	165	236	65	80	0#	10	1 561	2 181
2000-01	171	236	64	80	0#	10	1 519	2 181
2001-02	204	236	62	80	< 1	10	1 514	2 181
2002-03	233	236	72	80	0	10	1 661	2 181
2003-04	239	236	66	80	0	10	1 607	2 181
2004-05	240	236	80	80	0	10	1 742	2 181
2005-06	207	236	56	80	0	10	1 728	2 181
2006-07	206	236	66	80	0	10	1 773	2 181
2007-08	195	236	44	80	0	10	1 651	2 181
2008-09	207	236	71	80	0	10	1 628	2 181
2009-10	221	236	66	80	0	10	1 633	2 181
2010-11	191	236	80	80	0	10	1 543	2 181
2011-12	173	236	61	80	0	10	1 187	2 181
2012-13	209	236	75	80	0	10	1 436	2 181
2013-14	182	236	63	80	0	10	1 401	2 181
2014-15	132	236	67	80	0	10	1 254	2 181
2015-16	148	236	73	80	0	10	1 236	2 181
2016-17	141	236	69	80	0	10	1 309	2 181
2017-18	110	236	61	80	0	10	1 250	2 181
2018-19	105	236	47	80	0	10	1 260	2 181

\* FSU data.

# Values in HPB 10 included catches taken under exploratory permit.

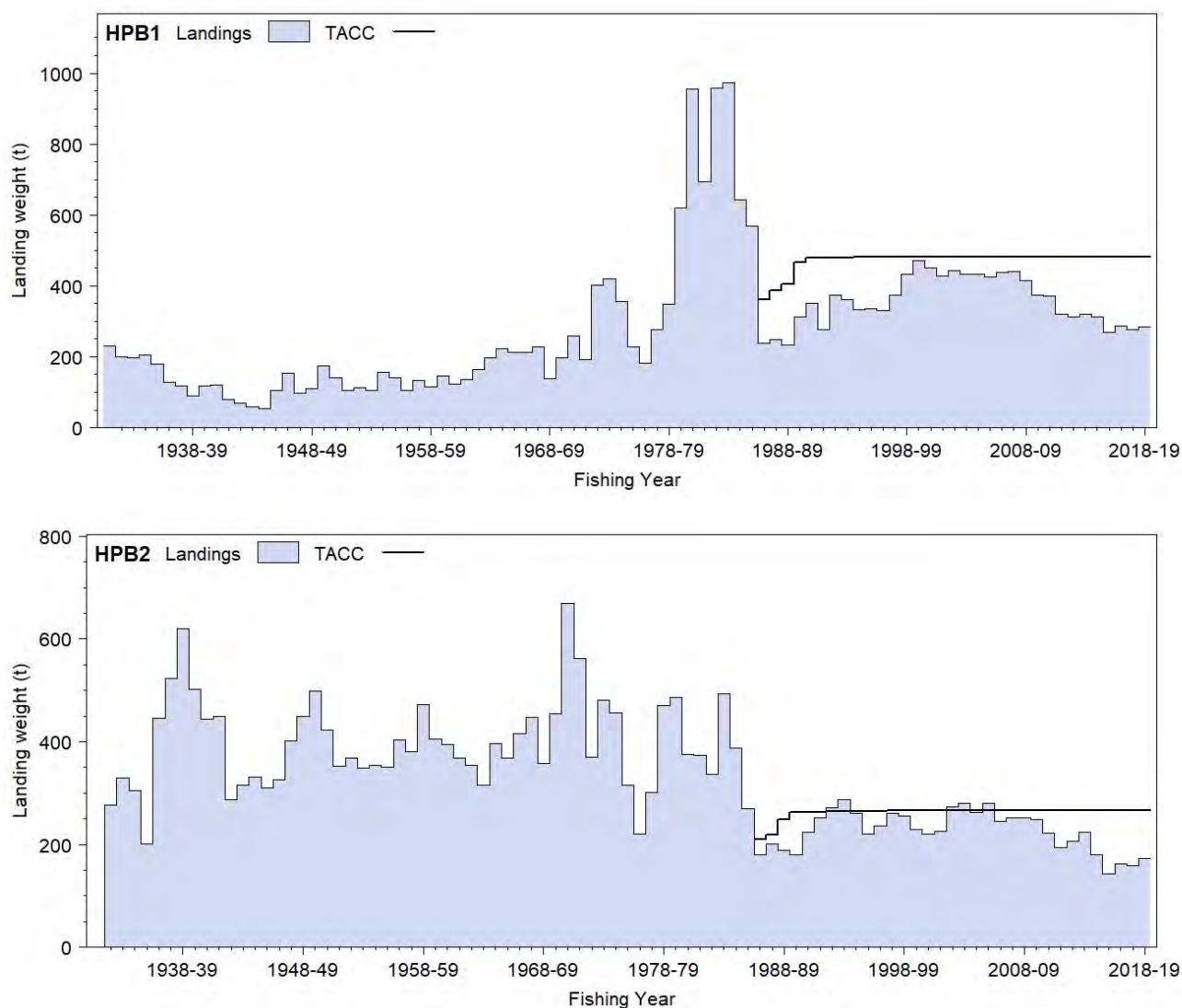


Figure 1: Total reported landings and TACC for the seven main HPB stocks. From top to bottom: HPB 1 (Auckland) and HPB 2 (Central East) [Continued on the next page].

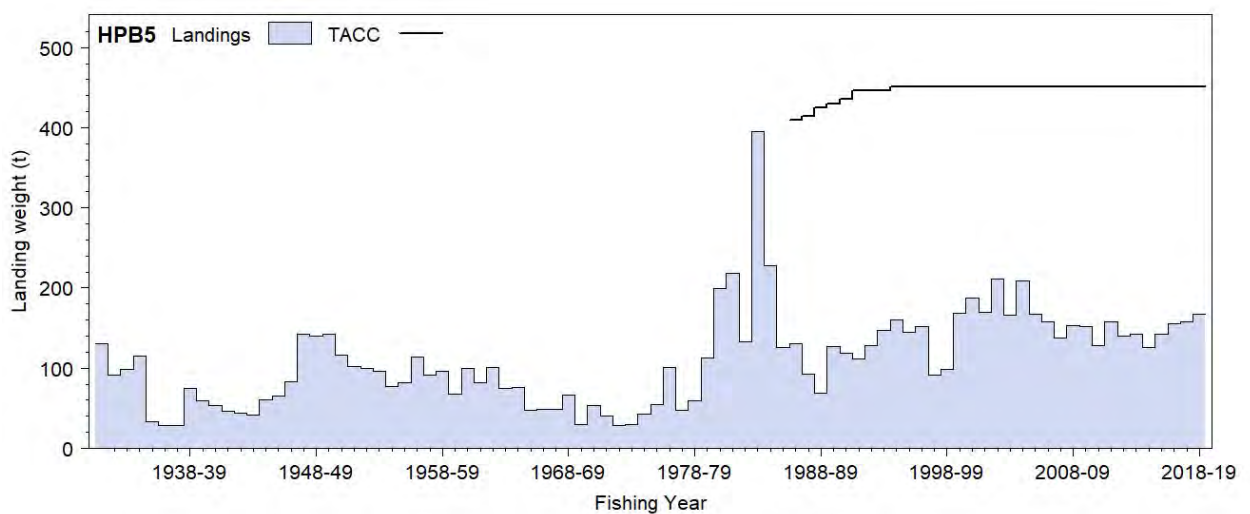
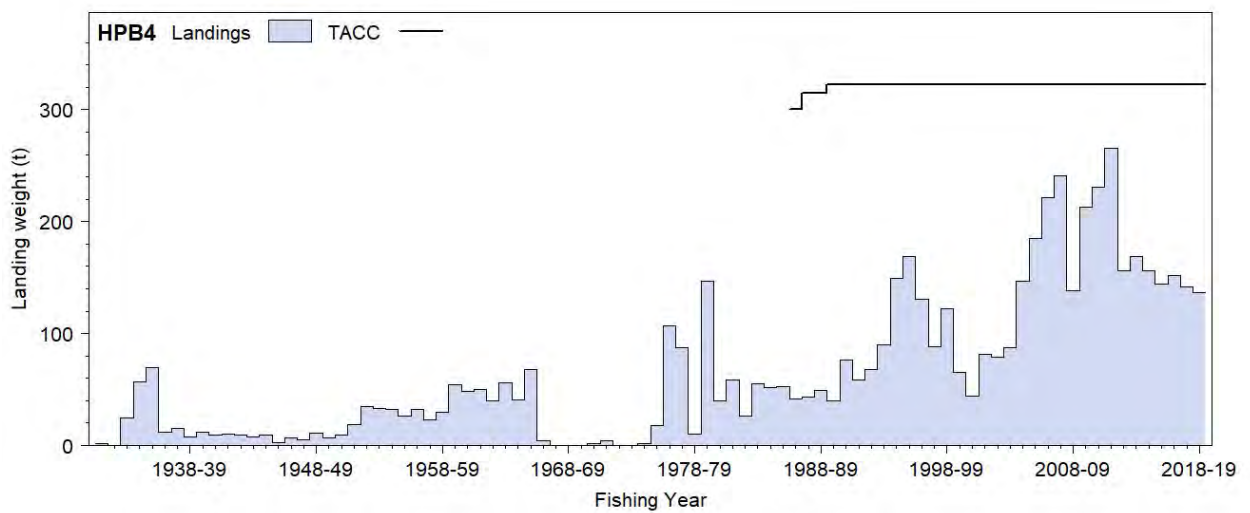
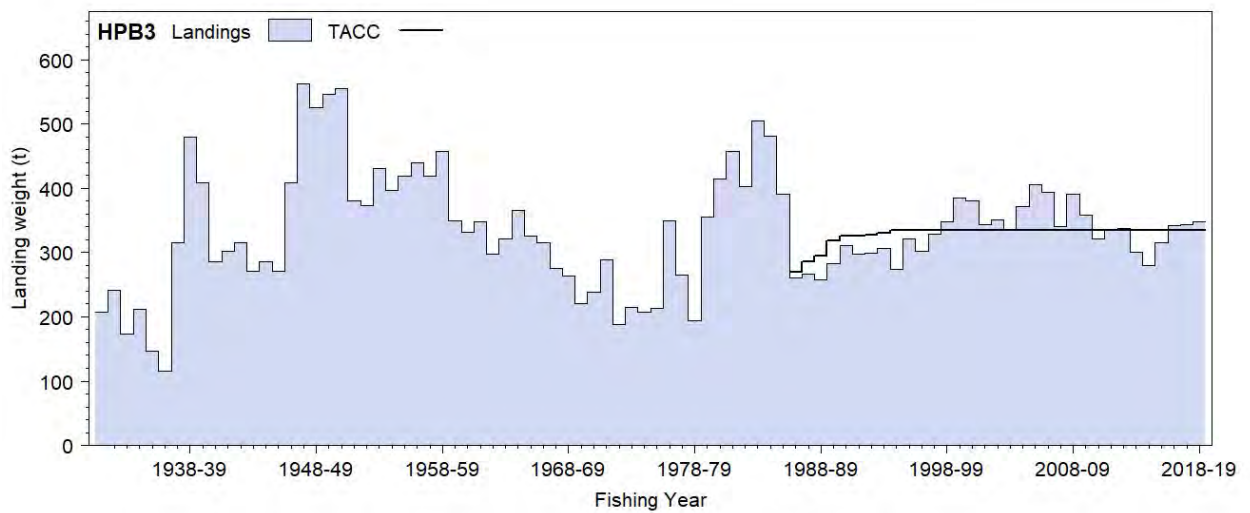


Figure 1 [Continued]: Total reported landings and TACC for the seven main HPB stocks. From top to bottom: HPB 3 (South East Coast), HPB 4 (Chatham Rise), and HPB 5 (Southland, Sub-Antarctic). [Continued on next page].

## GROPER (HPB)

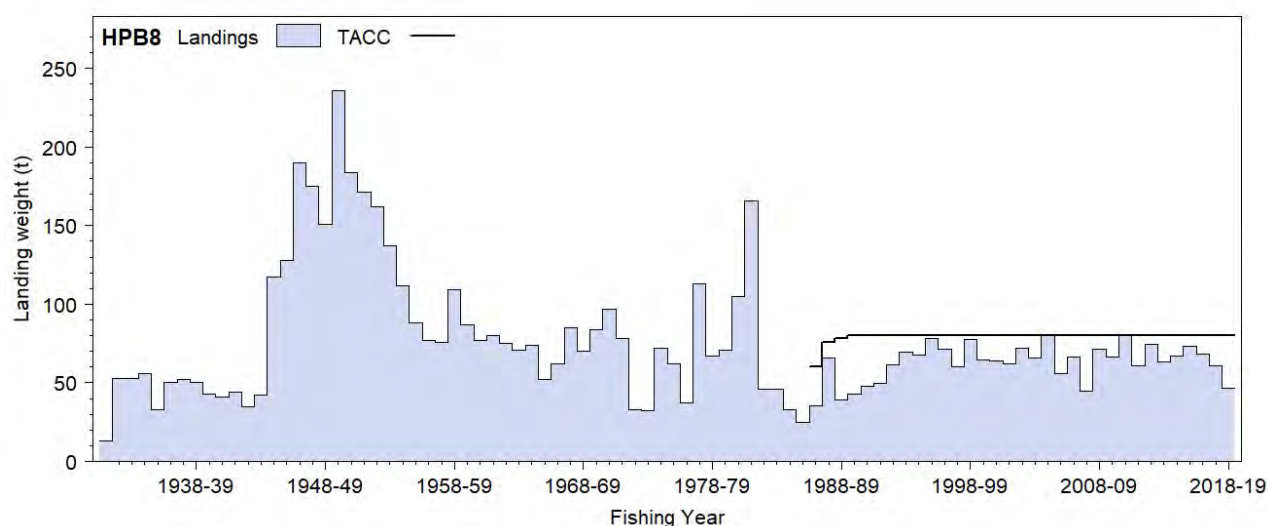
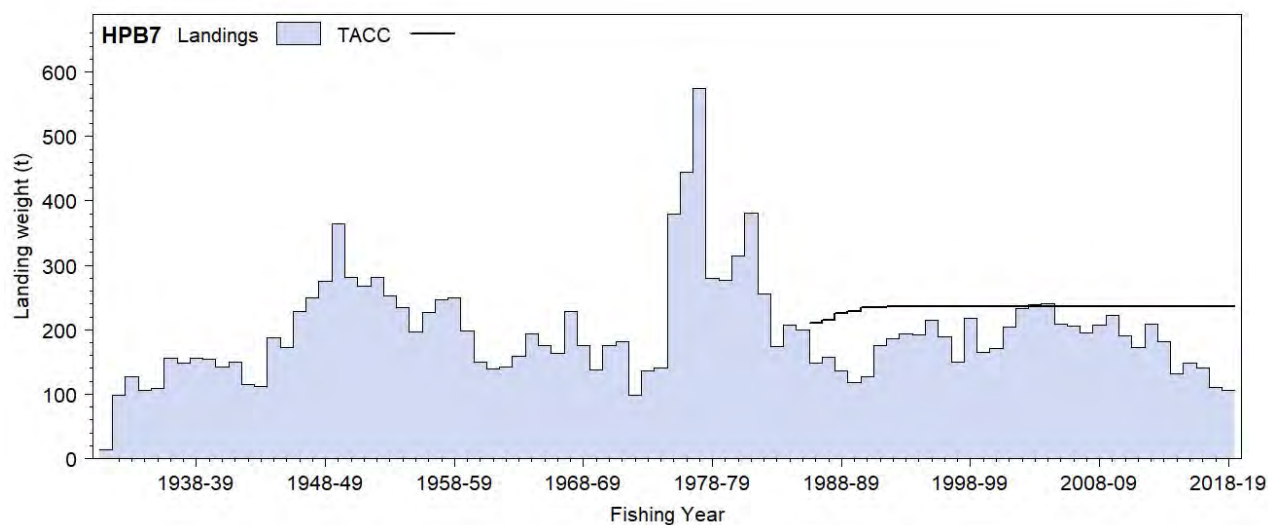


Figure 1 [Continued]: Total reported landings and TACC for the seven main HPB stocks. From top to bottom: HPB 7 (Challenger) and HPB 8 (Central).

### 1.2 Recreational fisheries

Groper are taken by handline and setline, and to a lesser extent by setnets. Recreational catch estimates from surveys undertaken in the 1990s are given in Tables 4–6.

Table 4: Estimated number of groper harvested by recreational fishers by Fishstock and survey, the corresponding estimated survey harvest and the estimated Fishstock harvest. Surveys were carried out in different years in the MAF Fisheries regions: South in 1991–92, Central in 1992–93 and North in 1993–94 (Teirney et al 1997).

Fishstock	Survey	Total		Survey harvest (t)
		Number	CV (%)	
HPB 1	North	22 000	17	190–220
HPB 2	North	1 000	-	5–10
HPB 2	Central	10 000	37	45–85
HPB 3	Central	3 000	-	10–30
HPB 3	South	4 000	40	10–30
HPB 5	Central	7 000	36	20–40
HPB 5	South	2 000	-	5–15
HPB 7	Central	12 000	40	45–115
HPB 8	Central	1 000	-	5–10

**Table 5: Results of a national diary survey of recreational fishers in 1996, indicating estimated number of groper harvested by recreational fishers by Fishstock and the corresponding harvest tonnage. The mean weights used to convert numbers to catch weight are considered the best available estimates. Estimated harvest is also presented as a range to reflect the uncertainty in the estimates (from Bradford 1998).**

Fishstock	Number caught	CV (%)	Harvest range (t)	Point Estimate (t)
HPB 1	11 000	17	40–60	49
HPB 2	23 000	22	75–125	100
HPB 3	4 000	-	-	-
HPB 5	2 000	-	-	-
HPB 7	9 000	-	-	-
HPB 8	< 500	-	-	-

**Table 6: Results of the 1999–2000 national diary survey of recreational fishers (Dec 1999–Nov 2000). Estimated number of groper harvested by recreational fishers by Fishstock, and the corresponding harvest tonnage. Estimated harvest is presented as a range to reflect the uncertainty in the estimates (Boyd & Reilly 2002).**

Fishstock	Number caught	CV (%)	Harvest range (t)	Point estimate (t)
HPB 1	60 000	39	209–476	342
HPB 2	56 000	33	307–608	457
HPB 3	52 000	50	97–293	195
HPB 5	6 000	70	14–80	47
HPB 7	17 000	37	79–172	125
HPB 8	2 000	67	6–32	19

The harvest estimates provided by telephone-diary surveys between 1993 and 2001 are no longer considered reliable for various reasons. A Recreational Technical Working Group concluded that these harvest estimates should be used only with the following qualifications: a) they may be very inaccurate; b) the 1996 and earlier surveys contain a methodological error; and c) the 2000 and 2001 estimates are implausibly high for many important fisheries. In response to these problems and the cost and scale challenges associated with onsite methods, a National Panel Survey was conducted for the first time throughout the 2011–12 fishing year. The panel survey used face-to-face interviews of a random sample of 30 390 New Zealand households to recruit a panel of fishers and non-fishers for a full year (Wynne-Jones et al 2019). The panel members were contacted regularly about their fishing activities and harvest information collected in standardised phone interviews. The national panel survey was repeated during the 2017–18 fishing year using very similar methods to produce directly comparable results (Wynne-Jones et al 2019). Recreational catch estimates from the two national panel surveys are given in Table 7. Note that national panel survey estimates do not include recreational harvest taken under s111 general approvals.

**Table 7: Recreational harvest estimates for groper stocks (Wynne-Jones et al 2014, 2019). Mean fish weights were obtained from boat ramp surveys (Hartill & Davey 2015, Davey et al 2019).**

Stock	Year	Method	Number of fish	Total weight (t)	CV
HPB 1	2011/12	Panel survey	14 264	83.5	0.37
HPB 2	2011/12	Panel survey	10 179	59.6	0.28
HPB 3	2011/12	Panel survey	6 383	37.4	0.31
HPB 5	2011/12	Panel survey	138	0.8	1.00
HPB 7	2011/12	Panel survey	2 163	12.7	0.41
HPB 8	2011/12	Panel survey	4 376	25.6	0.54
HPB 1	2017/18	Panel survey	12 250	73.1	0.21
HPB 2	2017/18	Panel survey	9 175	54.7	0.29
HPB 3	2017/18	Panel survey	8 474	50.5	0.36
HPB 5	2017/18	Panel survey	1 389	8.3	0.42
HPB 7	2017/18	Panel survey	5 937	35.4	0.35
HPB 8	2017/18	Panel survey	1 047	6.2	0.49

### 1.3 Customary non-commercial fisheries

Groper (hāpuku and bass) were certainly taken by early Maori, and would have been available in greater numbers at shallower depths than is the case at present. Traditional groper grounds are known in several

## GROPER (HPB)

regions. Quantitative information on the current level of customary non-commercial catch is not available.

### 1.4 Illegal catch

Quantitative information on the level of illegal catch is not available.

### 1.5 Other sources of mortality

None are apparent.

## 2. BIOLOGY

Both hāpuku and bass are widely distributed around New Zealand, generally over rough ground from the central shelf (about 100 m) to the shelf edge and down the upper slope. Their lower limits are ill-defined, but hāpuku extends to at least 300 m and bass to 500 m.

Hāpuku mature sexually between 10 and 13 years old and may live in excess of 60 years (Francis et al 1999). Cook Strait hāpuku mature over a wide size range, with the size at 50% maturity at 80–85 cm total length (TL) and 85–90 cm TL for males and females respectively (Paul 2002d). Spawning occurs during winter, anecdotally earlier in the north of New Zealand than in the south, but running ripe fish are seldom caught and spawning grounds are unknown. The smallest juveniles are virtually unknown, but are mottled, pelagic and epi-pelagic, perhaps schooling in association with drifting weed.

The size range of commercially caught hāpuku is 50–140 cm TL, with a broad mode between 70 and 100 cm TL. Bass are slightly larger at 60–150 cm TL, with a mode at 80–110 cm TL, but much bulkier and heavier at equivalent lengths.

There appear to be some regional differences in the size structure of populations. Trawl-caught hāpuku on the Stewart-Snares Shelf are mainly 50–80 cm, modal length 60 cm, and therefore juveniles. Trawl-caught hāpuku on the Chatham Rise are slightly larger, 50–100 cm, modal length 70 cm, with those on the shelf around the islands having their main mode at 60–75 cm; most of these fish are also juveniles. These offshore regions may be important nurseries.

Both groper species are assumed to be long-lived. Natural mortality in the past was assumed to be 0.2, however, a study of a South American (Juan Fernandez) population suggested that it may be lower (0.13–0.16) (Pavez & Oyarzun 1985). Furthermore, preliminary unvalidated ageing in New Zealand has indicated that maximum age may be greater than 40 years, and that  $M$  may be 0.1 or less (Francis et al 1999). This value of  $M$  will be retained until clearer information becomes available from ageing. Parker et al (2011) compared regional differences in the catch composition from observer collected data. This report noted that the proportion of age 10+ fish in the catch in the Kermadec and Northeastern regions (FMA 2) was greater than that of Southland.

Migration patterns are also little known, but are probably related to spawning. Tagging of mostly immature fish in Cook Strait has shown a high level of site fidelity, but about 5% of these fish have moved up to 160 km north and south. Other information is largely anecdotal and speculative. It is known that good fishing grounds, particularly pinnacles and reefs or ledges, can be quickly fished out and take some time to recover, suggesting a high level of residency (except, perhaps, for during the spawning season). On the other hand, trawlers sometimes catch groper on the flat and clear seafloor, and it is not known whether this represents their normal habitat, whether they are simply dispersing by travelling from one rough ground to another, or whether they are on a purposeful spawning migration.

Hāpuku and bass prey on a wide variety of fish and invertebrates, including red cod, tarakihi, blue cod, hoki and squid. In Cook Strait, they are preyed upon by sperm whales, although probably neither heavily nor selectively. Biological parameters relevant to stock assessment are shown in Table 8.



**Table 8: Estimates of biological parameters of groper.**

Fishstock	Estimate		Source
1. Natural mortality ( $M$ )			
All	$M = 0.1$		Francis et al (1999)
2. Weight = $a$ (length) <sup>b</sup> (Weight in g, length in cm fork length)			
	<u>Both sexes combined</u>		
BAS 1	$a = 0.2734$	$b = 2.382$	Johnston (1993)
HAP 1	$a = 0.0142$	$b = 3.003$	Johnston (1993)
HAP 2	$a = 0.0242$	$b = 2.867$	Johnston (1993)
HAP 7, 8	$a = 0.0142$	$b = 2.998$	Johnston (1983)

(HAP = hāpuku, BAS = bass groper)

### 3. STOCKS AND AREAS

Tagging studies reveal considerable mixing of hāpuku between Otago, South Canterbury and Cook Strait. Fishstock boundaries in Cook Strait separate Cook Strait hāpuku into three separate "stocks" (HPB 2, HPB 7, and HPB 8), none of which include Otago-Canterbury fish (HPB 3). Current Fishstock boundaries appear inappropriate for the management of Cook Strait and South Island hāpuku. Current stock boundaries are based on QMAs and do not reflect biological stocks. Existing data cannot describe the stock structure of New Zealand groper (Paul 2002b). Electrophoretic studies suggest that separate stocks of hāpuku could occur. However, the genetic heterogeneity of Cook Strait hāpuku, seasonal movements of hāpuku through this area, moderately long-distance movements of some tagged hāpuku, the presence of both species on open ground and the eventual recovery of heavily exploited reefs, suggest that either each stock is moderately mobile or that there is essentially only one stock (of each species) with some small geographic or temporal genetic differences.

### 4. STOCK ASSESSMENT

Yield estimates for HPB 4 and HPB 5 have been removed because the previous method used is now considered obsolete. The yield estimates for the other Fishstocks have been revised based on a revision of the estimate of  $M$ .

#### 4.1 Estimates of fishery parameters and abundance

Estimates of fishery parameters and abundance are not available. Paul (2002c) found that CPUE indices could not be developed for hāpuku and bass either separately or in combination.

#### 4.2 Biomass estimates

Estimates of current and reference biomass are not available. Data for hāpuku from the East Coast South Island trawl surveys have moderate CVs (average over all years = 28.17; range 19–35) and although the survey does not extend to the entire habitat range, the survey may be monitoring settled juveniles (Figure 2).

#### 4.4 Yield estimates and projections

Current biomass cannot be estimated, so  $CAY$  cannot be determined. Yield estimates are summarised in Table 9.

**Table 9: Yield estimates (t).**

Parameter	Fishstock	Estimate
	HPB 4	Cannot be determined
	HPB 5	Cannot be determined
	Total	Cannot be determined
$CAY$	All	Cannot be determined

## GROPER (HPB)

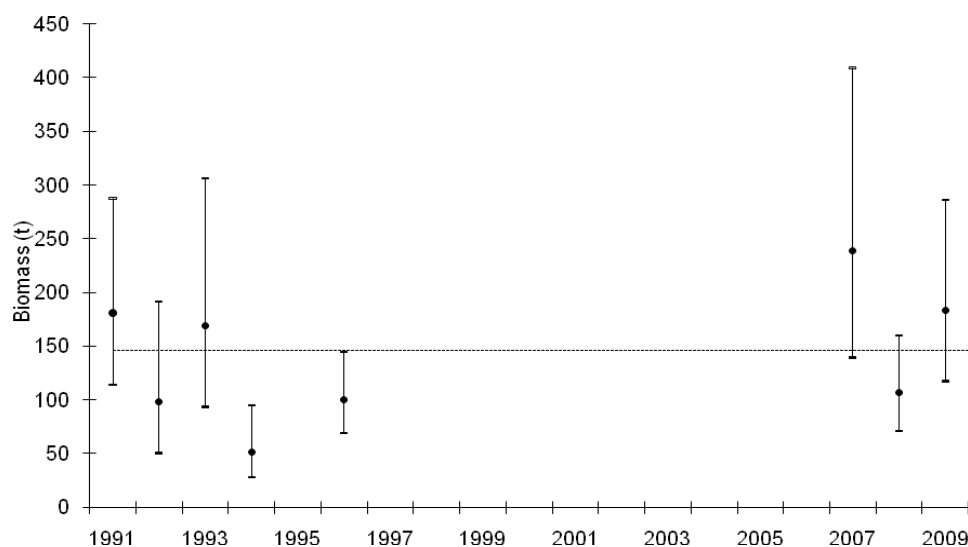


Figure 2: Biomass estimates  $\pm 95\%$  CI (estimated from survey CV's assuming a lognormal distribution) and the time series mean (dotted line) from the East Coast South Island trawl survey.

### 4.5 Other factors

Although no distinct stocks of either groper species have been identified, results from trawl surveys suggest that there are reasonably large but dispersed populations over the Stewart-Snares Shelf and the Chatham Rise. The relationship between these "offshore" and the more traditionally fished "inshore" populations is not known due to the lack of information on groper movements. Little is known of the species composition and population structure of groper on the rough bottom shelf and ridges extending northwards from New Zealand.

The relative quantity of groper taken as target and non-target catch has not been investigated, but is likely to have varied both spatially and temporally. Groper have been taken by the foreign licensed, chartered and New Zealand-owned trawlers working offshore grounds; although being regarded as a small bycatch they were not accurately reported before 1986. The *MCY* may therefore be underestimated.

There are three regions where the groper catch has been substantially lower than the TACC.

HPB 1 - Three features of the fishery appear to explain the under-catch of the TACC. (i) A considerable part of the fishing effort which had generated the high catches in the early 1980s left the fishery. (ii) The allocated quota is widely distributed in small units among fishers who appear to use only a modest proportion of it to cover bycatch. (iii) The fishers who hold larger amounts of quota generally also use only a proportion of it to land high-quality fish (in contrast to the earlier bulk landings of lower-quality fish).

HPB 4 and 5 - The original yield estimates made before the introduction of the QMS and the original TAC were based on trawl surveys, not catch histories. The TACCs for these Fishstocks can only be economically targeted around the Chatham Islands in HPB 4, and a few localities in HPB 5. Elsewhere, it is used to cover a small bycatch from trawlers. A moderate quantity of quota is held, unused, by companies which would require it should they resume target fishing for ling and associated species.

## 5. STATUS OF THE STOCKS

No estimates of current biomass are available. An estimate of  $B_{AV}$  is available for HPB 5.

It is not known if current catches or the TACCs are sustainable or at levels that will allow the stocks to move towards a size that will support the maximum sustainable yield.

Yield estimates, TACCs and reported landings are summarised in Table 10.

**Table 10: Summary of TACCs (t) and reported landings (t) of groper for the most recent fishing year.**

Fishstock	QMA	FMAs	2018–19	2018–19
			Actual TACC	Reported Landings
HPB 1	Auckland (East, West)	1 & 9	481	283
HPB 2	Central (East)	2	266	173
HPB 3	South-east (Coast)	3	335	347
HPB 4	South-east (Chatham)	4	323	137
HPB 5	Southland, Sub-Antarctic	5 & 6	451	167
HPB 7	Challenger	7	236	105
HPB 8	Central (West)	8	80	47
HPB 10	Kermadec	10	10	0
Total			2 181	1 260

## 6. FOR FURTHER INFORMATION

- Beentjes, M P; Francis, M P (1999) Movements of hapuku, *Polyprion oxygeneios* determined from tagging studies. *New Zealand Journal of Marine and Freshwater Research* 33(1): 1–12.
- Boyd, R O; Reilly, J L (2002) 1999/2000 national marine recreational fishing survey: harvest estimates. Draft New Zealand Fisheries Assessment Report. (Unpublished report held by Fisheries New Zealand.)
- Bradford, E (1998) Harvest estimates from the 1996 national recreational fishing surveys. New Zealand Fisheries Assessment Research Document. 1998/16. 27 p. (Unpublished report held by Fisheries New Zealand.)
- Davey, N; Hartill, B; Carter, M (2019) Mean weight estimates for recreational fisheries in 2017–18. Draft New Zealand Fisheries Assessment Report held by Fisheries New Zealand.
- Francis, M P; Mulligan, K P; Davies, N M; Beentjes, M P (1999) Age and growth estimates for New Zealand hapuku, *Polyprion oxygeneios*. *Fishery Bulletin*. 97(2): 227–242.
- Hartill, B; Davey, N (2015) Mean weight estimates for recreational fisheries in 2011–12. *New Zealand Fisheries Assessment Report 2015/25*.
- Hurst, R J; Bagley, N W; Uozumi, Y (1990) New Zealand-Japan trawl survey of shelf and upper slope species off southern New Zealand, June 1986. *New Zealand Fisheries Technical Report* No. 18. 50 p.
- Johnston, A D (1983) The southern Cook Strait groper fishery. *Fisheries Technical Report* No. 159. 33 p.
- Johnston, R G (Ed.) (1993) Report from the Conversion Factors Working Group and Steering Committee 1992. MAF Fisheries, Greta Point Internal Report No. 201. 171 p. (Unpublished report held in NIWA library, Wellington.)
- McDougall, C R (1975) Age and growth of *Polyprion oxygeneios* (Pisces: Serranidae) in Cook Strait. (Unpublished B.Sc. (Hons) thesis (Zoology), Victoria University of Wellington.)
- Parker, S J; Paul, L J; Francis, M P (2011) Age structure characteristics of hapuku *Polyprion oxygeneios* stocks from existing samples of otoliths. *New Zealand Fisheries Assessment Report 2011/31*. 42 p.
- Paul, L (2002a) A description of the New Zealand fisheries for the two groper species, hapuku (*Polyprion oxygeneios*) and bass (*P. americanus*). *New Zealand Fisheries Assessment Report 2002/13*. 47 p.
- Paul, L (2002b) Can existing data describe the stock structure of the two New Zealand groper species, hapuku (*Polyprion oxygeneios*) and bass (*P. americanus*)? *New Zealand Fisheries Assessment Report 2002/14*. 24 p.
- Paul, L (2002c) Can separate CPUE indices be developed for the two groper species, hapuku (*Polyprion oxygeneios*) and bass (*P. americanus*)? *New Zealand Fisheries Assessment Report 2002/15*. 24 p.
- Paul, L (2002d) Size structure of hapuku (*Polyprion oxygeneios*) and bass (*P. americanus*) populations in New Zealand. *New Zealand Fisheries Assessment Report 2002/16*. 17 p.
- Paul, L J (1985) The estimation of hapuku and bass yields for New Zealand fishing regions. Fisheries Research Division Internal Report No. 26. 31 p. (Unpublished report held in NIWA library, Wellington.)
- Paul, L J; Davies, N M (1988) Groper. New Zealand Fisheries Assessment Research Document 88/15. 27 p. (Unpublished report held by NIWA library, Wellington.)
- Pavez, P; Oyarzun, M E (1985) Determination of the relative efficiency of hooks, and growth parameters of the Juan Fernandez "cod" *Polyprion oxygeneios* Bloch and Schneider, 1801, in the Robinson Crusoe and Santa Clara Islands. In Arana, P (Ed.), "Investigaciones en el Archipelago de Juan Fernandez", pp. 341–345. Escuela de Ciencias del Mar, UCValparaíso. [In Spanish, English summary.]
- Teirney, L D; Kilner, A R; Millar, R E; Bradford, E; Bell, J D (1997) Estimation of recreational catch from 1991/92 to 1993/94 New Zealand Fisheries Assessment Research Document 1997/15. 43 p. (Unpublished report held by NIWA library, Wellington.)
- Teirney, L; McKinnon, S; Kilner, A; Sylvester, T (1991) Marine Recreational Fisheries Working Group Report — November 1991. New Zealand Fisheries Working Group Report 91/1. 46 p.
- Teirney, L D; Olsen, D L (1992) Marine Recreational Fisheries Group Report — November 1992. New Zealand Fisheries Working Group Report 92/1. 13 p.
- Wynne-Jones, J; Gray, A; Hill, L; Heinemann, A (2014) National Panel Survey of Marine Recreational Fishers 2011–12: Harvest Estimates. *New Zealand Fisheries Assessment Report 2014/67*.
- Wynne-Jones, J; Gray, A; Heinemann, A; Hill, L; Walton, L (2019). National Panel Survey of Marine Recreational Fishers 2017–2018. Draft New Zealand Fisheries Assessment Report held by Fisheries New Zealand.